

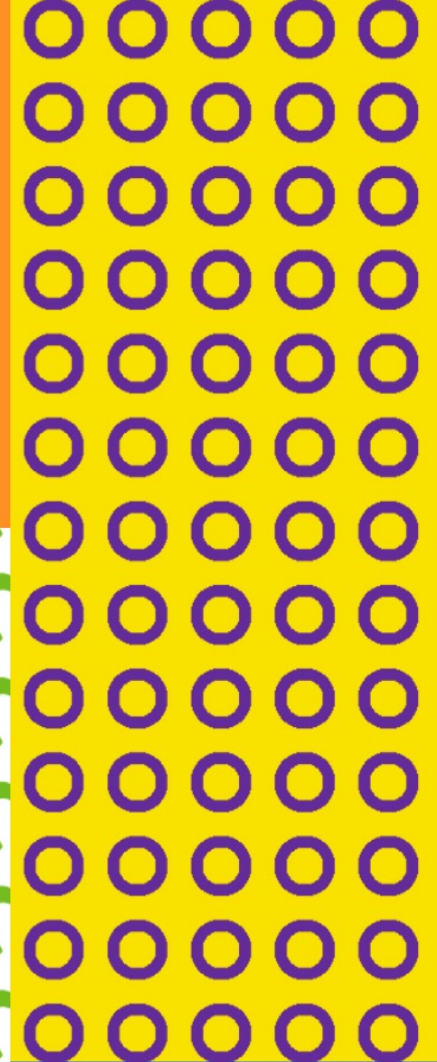


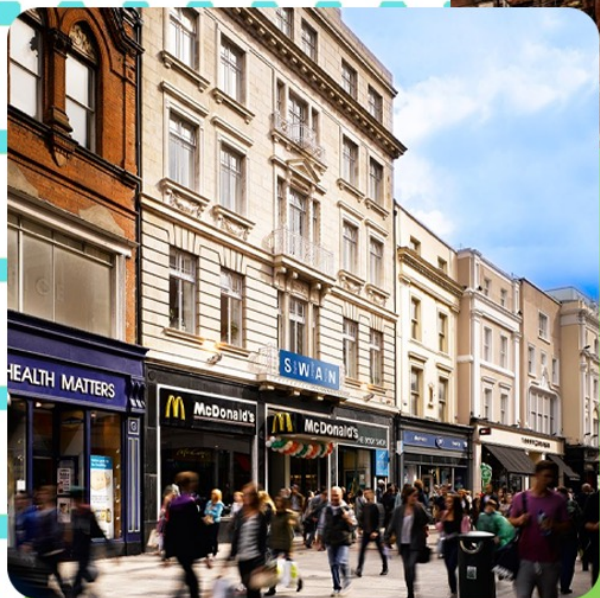
S English W Language A Training N

English

Language

Training





About Swan

Established in 1988 - Independent language school

- Long-standing, world renowned reputation you can trust

Worthy accreditations to guarantee quality & protect you

- Recognised by ACELS, a service of Quality and Qualification, for English Language Training
- Accredited by EAQUALS
- Members of ELE English Language Education Ireland





Erasmus+



ACCREDITED
Eaquals
Excellence in Language Education



The Accreditation and
Co-ordination of English
Language Services



ELE IRELAND
Student Protection
Scheme

Accreditations & Memberships



EDUCATION
IN IRELAND
WORLD-CLASS STANDARDS
WARMEST OF WELCOMES



ELE IRELAND
Escrow
Learner
Protection



English
Education
Ireland



TRINITY
COLLEGE LONDON

Validated Course Provider 71922



What Swan Offers:

General Course English



Ages 17+
Mornings and/or afternoons
Monday-Friday
All Levels

IELTS Exam Preparation



Mornings
Monday-Friday
All Levels
Intensive Exam Prep

Junior Summer & Mini Stay Programmes



Mornings and/or afternoons
Monday-Friday
Activities, including full-day excursions
Irish cultural element

Teacher Training & Speciality Programmes



All Levels
Range of topics from aviation, to
sustainability, to teacher training

Internship/Work Placement



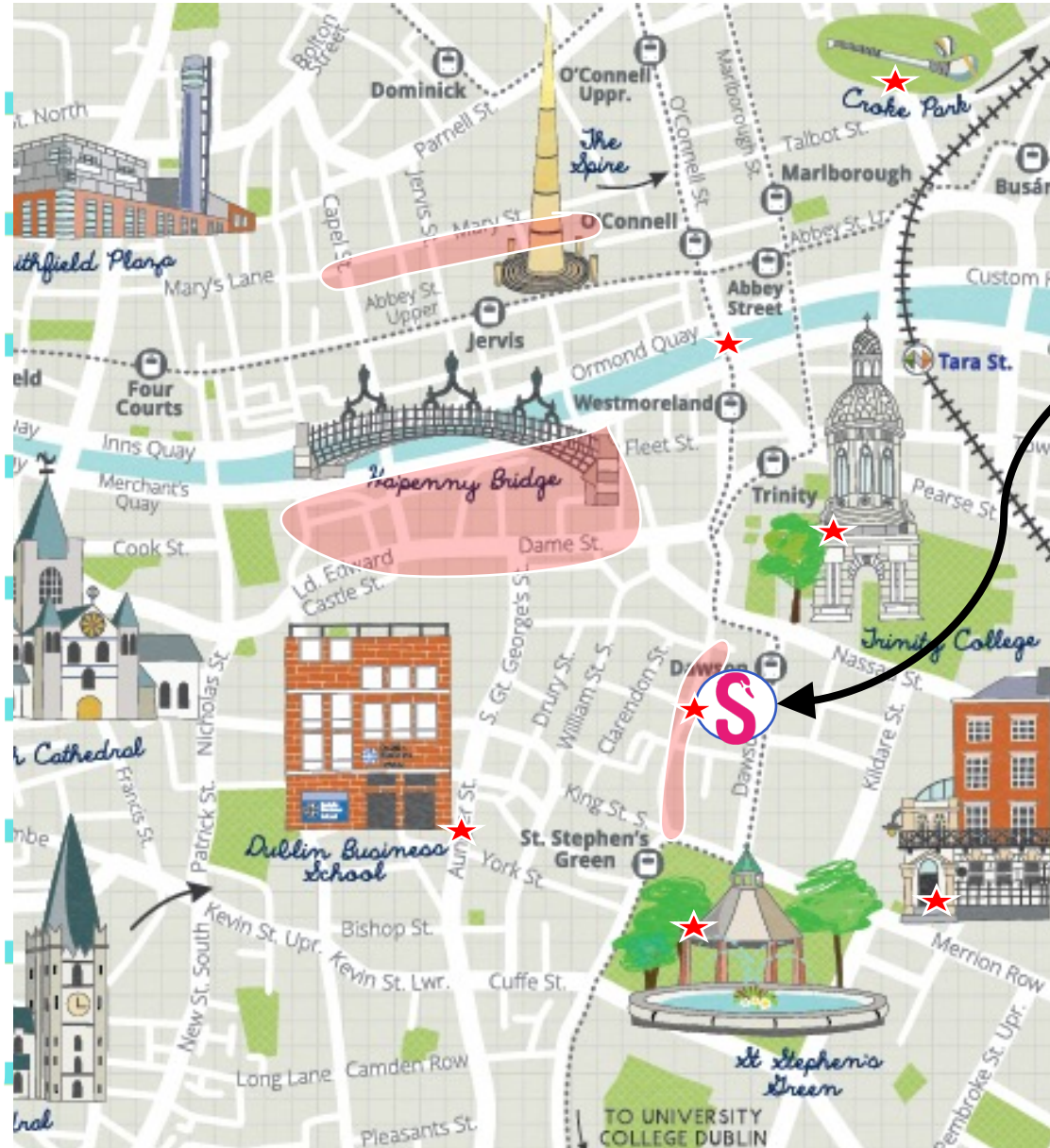
Internships/Work Placement
opportunities in a variety of industries



Erasmus+

Why Dublin?

- Dublin is the capital of Ireland
- Dublin is one of the safest cities in Europe, famous for its friendly and hospitable people.
- Dublin has the youngest population in Europe. 1/3 of the population is under 30.
- Dublin is named 'City of Literature' and has produced many famous writers such as James Joyce, Bram Stoker, Brendan Behan, Roddy Doyle.
- The main bridge in Dublin is O'Connell Bridge, which is as wide as it is long.
- Dublin hosts the oldest University in Ireland, Trinity College, which was established in 1592.
- Dublin is home to the European Headquarters for many internationally renowned companies



S English **W** Language **A** Training **N**

- Grafton Street
- Trinity College Dublin
- Temple Bar
- The Spire
- The GPO
- St Stephen's Green
- The Ha'penny Bridge
- Dublin Castle
- The National Gallery



Class Schedule

- Morning Course (09.00 – 13.00)

20 hours per week

- Afternoon Course (13.45 – 17.00)

16.25 hours per week

- Semi Intensive Course (9.00 – 13.00 & 13.45 – 17.00 three times per week)

29 hours per week

- Intensive Course (Morning + Afternoon)

36.25 hours per week



What to expect at Swan

- 12 Classrooms
- Max. 15 students per class
- Small School = Personal Service
- Highly qualified and experienced teachers



- Monthly teacher-student tutorial
- Weekly skills & progress tests
- Clear weekly learning goals
- Latest 65-inch interactive smart board & iPads

- Social/cultural Programme
- Afternoon & full day Saturday excursions
- Free afternoon workshops (e.g. CV preparation, conversation practise, Irish culture, movies)



S

English

W

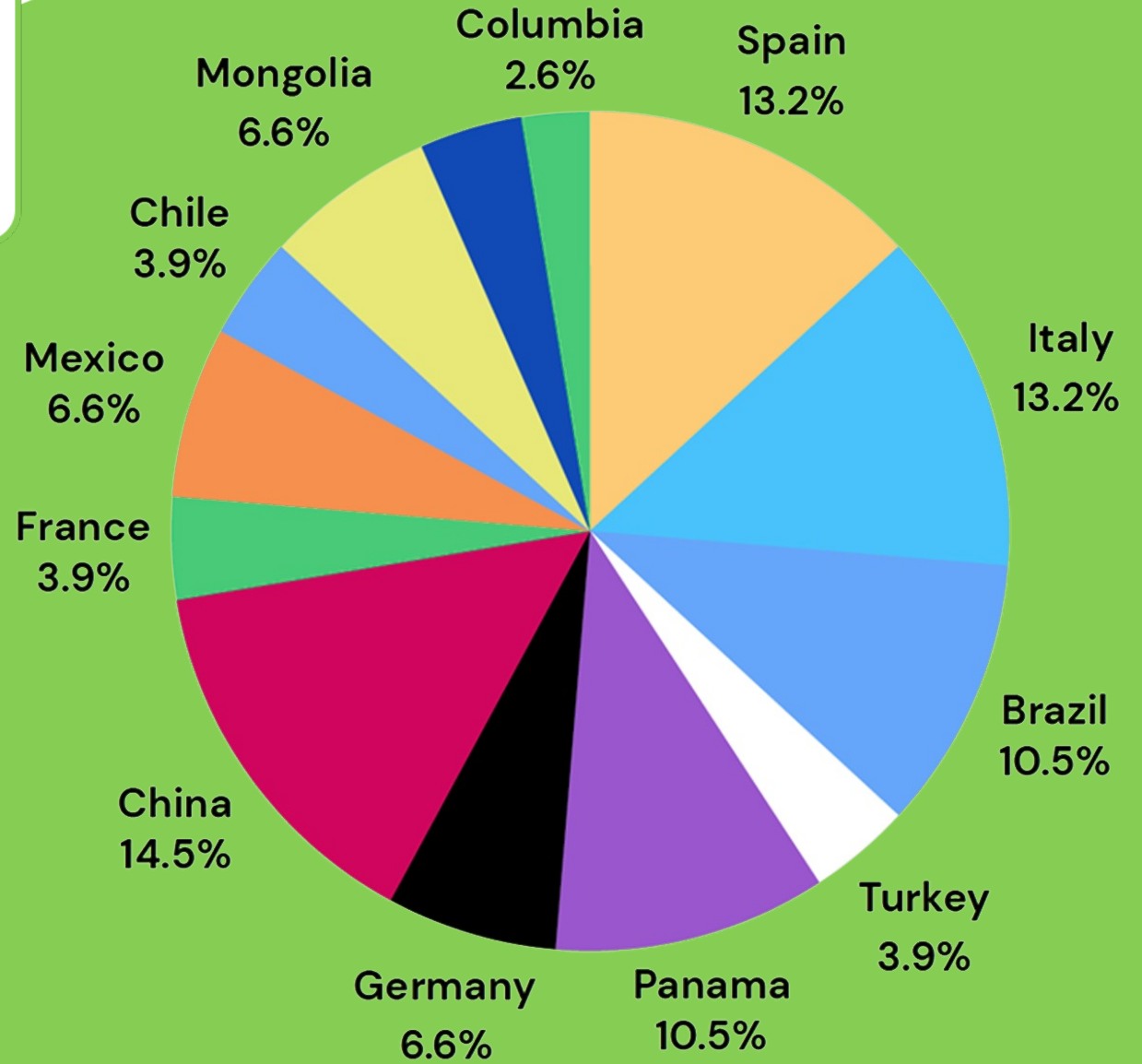
Language

A

Training

N

**Adult
Student
Nationality
Mix**





Erasmus+

Internship and Erasmus+ Programmes – Students and Adults

- We organise EU funded internship placements from within the EU.
- SWAN Training Institute has been acting as a receiving/hosting partner for European projects such as Leonardo da Vinci, Erasmus and Vet programmes since 1995.
- Work with universities, schools, vocational schools, etc. from more than 15 different European countries.
- Manage, coordinate and monitor mobility activities for students, trainees, apprentices and young people.
- Place interns in most sectors: IT, business, administration, childcare, marketing, hospitality, garage, and many more. Trustworthy SME companies, great atmosphere, professional and personal development
- Arrange accommodation in host families, student apartments, return airport transfers, cultural programme, all the documents required for the Erasmus+ projects such as final report, certificates, agreements etc.





Erasmus+

- We match students' CVs, level of English, previous experience and background, taking into consideration students' preferences, with suitable companies.
- Internships are from 6 to 8 hours a day (companies decide the working hours) and are unpaid.
- Participants have a mentor in the company and a tutor in SWAN Training Institute.
- Have at least an intermediate level of English - B1-B2!
- Be prepared for interview and are expected to perform at the interview to the best of their ability
- Have a commitment to fulfil job duties for the entire duration of the programme
- Be aware that an internship takes place in a real work environment. Companies take the experience seriously and participants should act accordingly
- Have a flexible attitude
- Be willing to learn
- Be 18 years old, 17 years old if part of a group



Erasmus+ Teacher Training & Speciality Courses



Teacher Training Courses

- CLIL
- ICT in ELT
- Teacher Refresher Programme
- Academic Management in ELT
- Teaching English to Young Learners

Speciality Courses

- English Language & Sustainability
- English Language & Irish Culture
- English for Professional Purposes
- Academic Writing and Presentation Skills



Erasmus+



S English **W** Language **A** Training **N**

Adult Programme Video





MINI STAYS

Our Mini Stay programmes are completely student centred. In our unique approach, students participate in the creation of the weekly lesson programme, based on their interests



TS

Mini Stay English Language Programme

- At the beginning of each mini stay, students negotiate topics with their teacher
- Students set 2/3 daily goals
- Students choose 2/3 personal goals
- Class projects presented at the end of the programme
- Option of mixed nationality classes instead of closed group
- End of course Swan certificate



Sample Weekly Lessons

Day 1 (Topic 1)	Day 2 (Topic 2)	Day 3 (Topic 3)	Day 4 (Topic 4)	Day 5 (Topic 5)
Communicative English	Cultural English	Communicative English	Cultural English	Communicative English
English Skills	English Skills	English Skills	English Skills	English Skills
Cultural English	Communicative English	Cultural English	Communicative English	Cultural English



Sample Communicative and Irish Cultural Topics



People And Personality



Food



Schools and University



Sport



Healthy Body



Irish People



Irish Food



Irish Writers

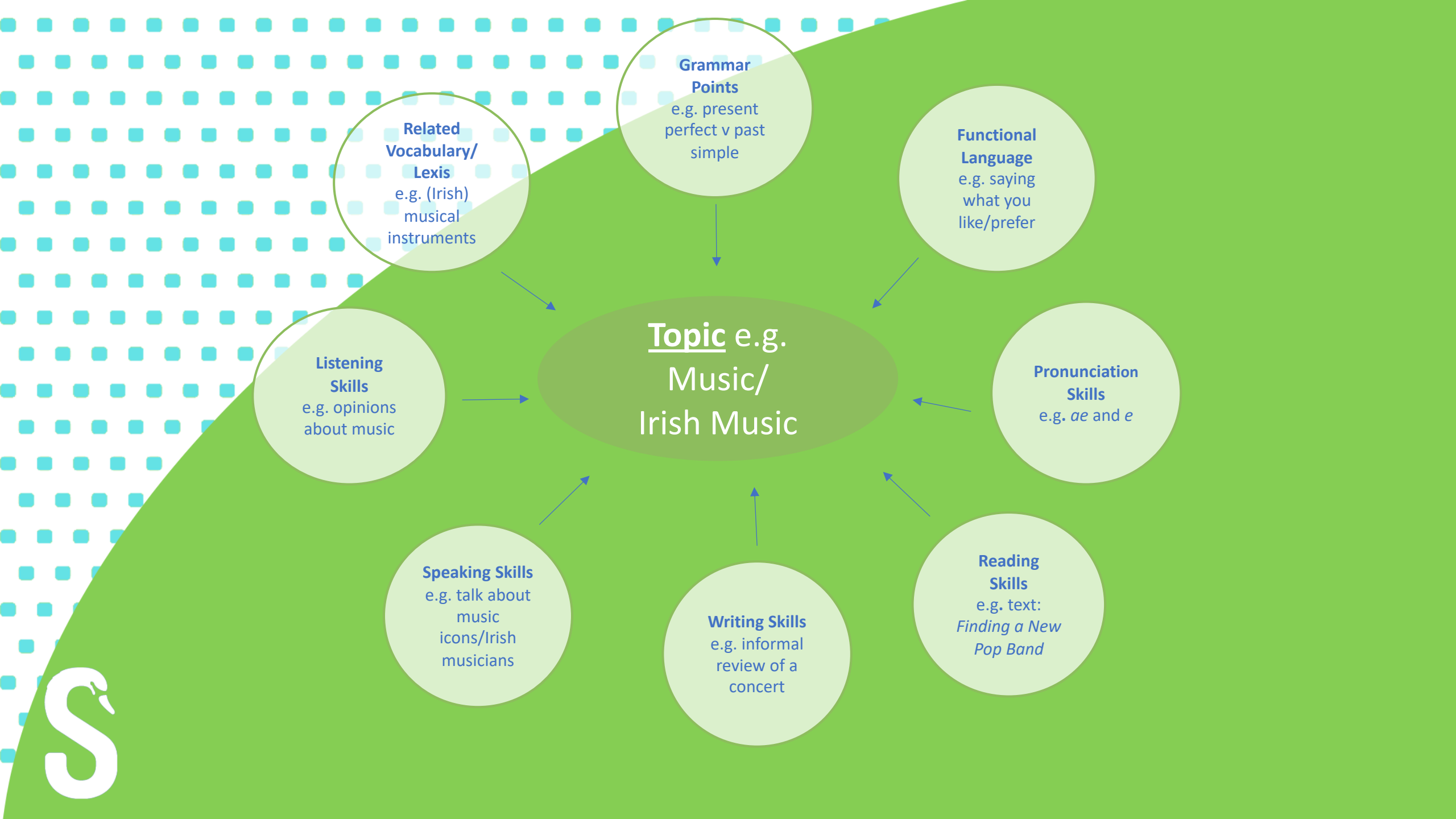


Irish Sport



Irish Dancing





Grammar Points

e.g. present perfect v past simple

Functional Language

e.g. saying what you like/prefer

Pronunciation Skills

e.g. *ae* and *e*

Reading Skills

e.g. text:
Finding a New Pop Band

Writing Skills

e.g. informal review of a concert

Speaking Skills

e.g. talk about music icons/Irish musicians

Listening Skills

e.g. opinions about music

**Related Vocabulary/
Lexis**

e.g. (Irish) musical instruments

**Topic e.g.
Music/
Irish Music**



Choose from 1 of 3 Mini Stay Packages



BRONZE



SILVER



GOLD

S English **W** Language **A** Training **N**



Bronze Package

- Return Airport Transfers
- 15 Hours English classes per week including breaks
- Morning or Afternoon classes
- Full Board Sharing Host Family Accommodation
or
- Full Board Single Room Residential Accommodation
(Mid May – Mid Aug only)
- Welcome Pack and Materials
- Certificate of Completion



Silver Package

- **Includes Everything from the Bronze Package**
- 5 supervised Activities per week
- Full Day -Saturday excursion with guide

No entrance fee

Travel pass to get to activities(additional cost)

Silver Afternoon Options

National Gallery
National Museum of Archaeology
Irish Museum of Modern Art
Chester Beatty Library
National Botanic Gardens
Dundrum Shopping Centre

Silver Saturday Excursion

Bray
Howth
Phoenix Park



Gold Package

Everything from Silver Package plus upgraded

Activities

Excursion

Gold Afternoon Options

Trinity College/Book of Kells

Dublin Castle

Dublinia

Croke Park

St. Patrick's Cathedral

Christ Church

EPIC Museum

Malahide Castle

Guinness Storehouse (adults only)

Bowling

Gold Saturday Excursion Options

Glendalough

Kilkenny

Powerscourt Gardens

Emerald Park



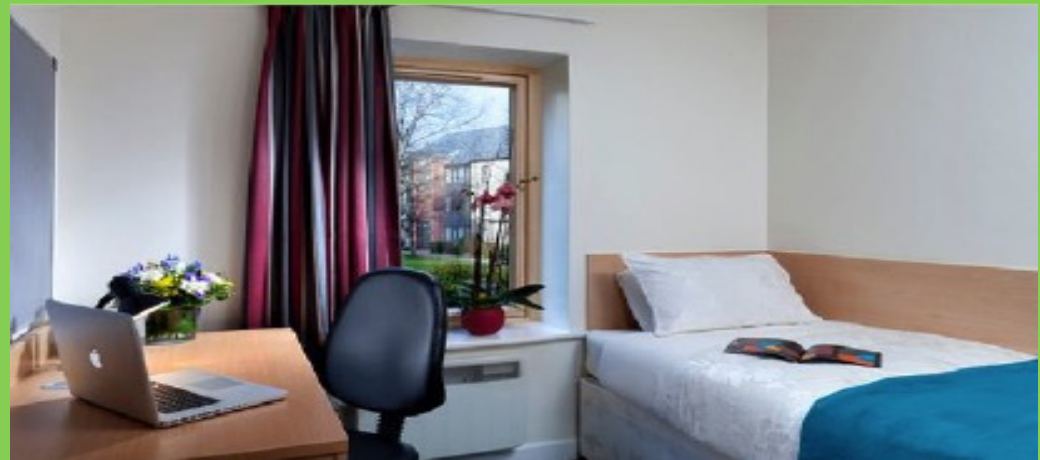
Host Family Accommodation (Full board/ Sharing)

- English in Ireland is clear and easy to understand
- Irish families are friendly and gregarious
- Opportunity to practise English as members of an authentic Irish family
- Experience of Irish culture and family life
- Families in Dublin live in suburban areas outside the city centre
- Middle class areas chosen by the school are safe and secure
- Families are within easy access to the city centre by public transport



Residential Accommodation in UCD

- Modern and luxurious residence is just 25 minutes by public transport from Dublin city centre
- Single rooms
- 4 Bedrooms sharing 2 bathrooms
- Includes bed linen & towels
- Free Wi-Fi
- Small Shared Kitchenette/Living Room
- Restaurant area called “The Village” nearby on campus which has a selection of catering options available





SWAN MINI-STAY PROGRAMME (Host Family)

Closed groups ONLY. **Minimum 15 students required for below rate.**

For groups of less than 15 students, smaller group prices with free leader available on request.

(For students aged 12+)

High season = March - October, Low season = January, February, November, December

Course Type	Includes	1 week NET	2 weeks NET
BRONZE PACKAGE	<ul style="list-style-type: none">Return airport transferShared room full board15 hours English classes per week including breaksMorning or Afternoon classesWelcome Pack and MaterialsCertificate of Completion	<i>High Season</i> €475.00	<i>High Season</i> €915.00
		<i>Low Season</i> €450.00	<i>Low Season</i> €870.00
SILVER PACKAGE	<ul style="list-style-type: none">Everything from BRONZE PACKAGE5 supervised afternoon activities1 Saturday excursion <p>(Some activities and all excursions require a travel pass, not included in the package)</p>	<i>High Season</i> €515.00	<i>High Season</i> €1005.00
		<i>Low Season</i> €490.00	<i>Low Season</i> €955.00
GOLD PACKAGE	<ul style="list-style-type: none">Everything from SILVER PACKAGEUpgrade to paid activitiesUpgrade to guided excursions with private coach	Prices on request	

- Activities will be arranged by SWAN. For a customised activity programme please contact us directly
- 1 leader free per group of 15 paying students. **Extra group leader €395 per week**
- SWAN reserves the right to choose location and timing at certain times of the year
- A Travel Pass is not included in the above package price. This pass is necessary for travelling between the host family and school and for most of the activities
- Supplement of €120 each way per group for late arrival/departure between 21:00-08:00

SWAN MINI-STAY PROGRAMME (Residence)

Minimum 15 students required for below rate.

For groups of less than 15 students, please contact us for smaller group prices.

(For students aged 12-18)

Available from Mid May - Mid August

Course Type	Includes	1 week NET	2 weeks NET
BRONZE PACKAGE	<ul style="list-style-type: none">Return airport transferShared room full board15 hours English classes per week including breaksMorning or Afternoon classesWelcome Pack and MaterialsCertificate of Completion	€695	€1335
SILVER PACKAGE	<ul style="list-style-type: none">Everything from BRONZE PACKAGE plus:5 supervised afternoon activities1 Saturday excursion <p>(Some activities and all excursions require a travel pass, not included in the package)</p>	€745	€1435
GOLD PACKAGE	<ul style="list-style-type: none">Everything from SILVER PACKAGE plus:Upgrade to paid activitiesUpgrade to guided excursions with private coach	Prices on request	

- Activities will be arranged by SWAN. For a customised activity programme please contact us directly
- 1 leader free per group of 15 paying students. **Extra group leader €715 per week**
- SWAN reserves the right to choose location and timing at certain times of the year
- A Travel Pass is not included in the above package price. This pass is necessary for traveling and from the school and for many activities
- Supplement of €120 each way per group for late arrival/departure between 21:00-08:00



Swan Junior International Summer Programme

University College Dublin (UCD)

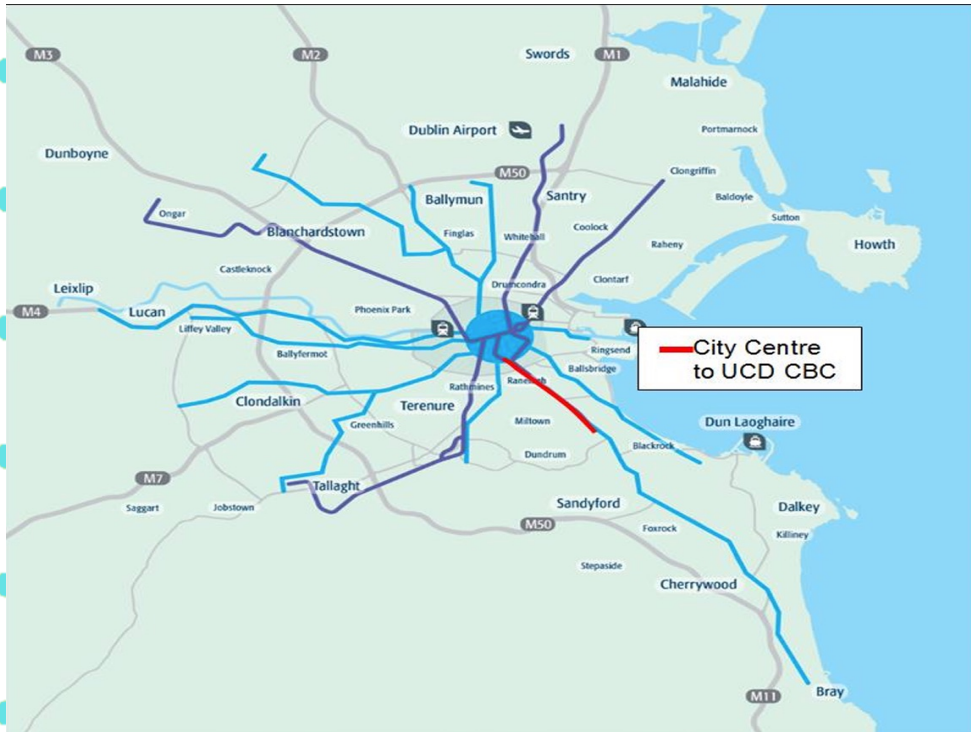


Location

UCD – 4km from the city centre

20 mins from Grafton Street

Easily accessible by public transport



Summer at S English W Language A Training N

For students aged 12-17 years old

First day of class: Monday 29th June 2026
Last day of class: Friday 7th August 2026





**State of the Art
Facilities**

Schedule

§ 1st day City Centre Orientation

§ Lessons Monday-Friday, 09.00 - 12.30

§ 5 weekly activities divided into: on campus and off campus activities/half day trips

§ On-Campus Afternoon Activities (Arts, Dance, Drama, Sports)

§ Evening Activities (Disco every week for all + a regular evening programme for residential students!)

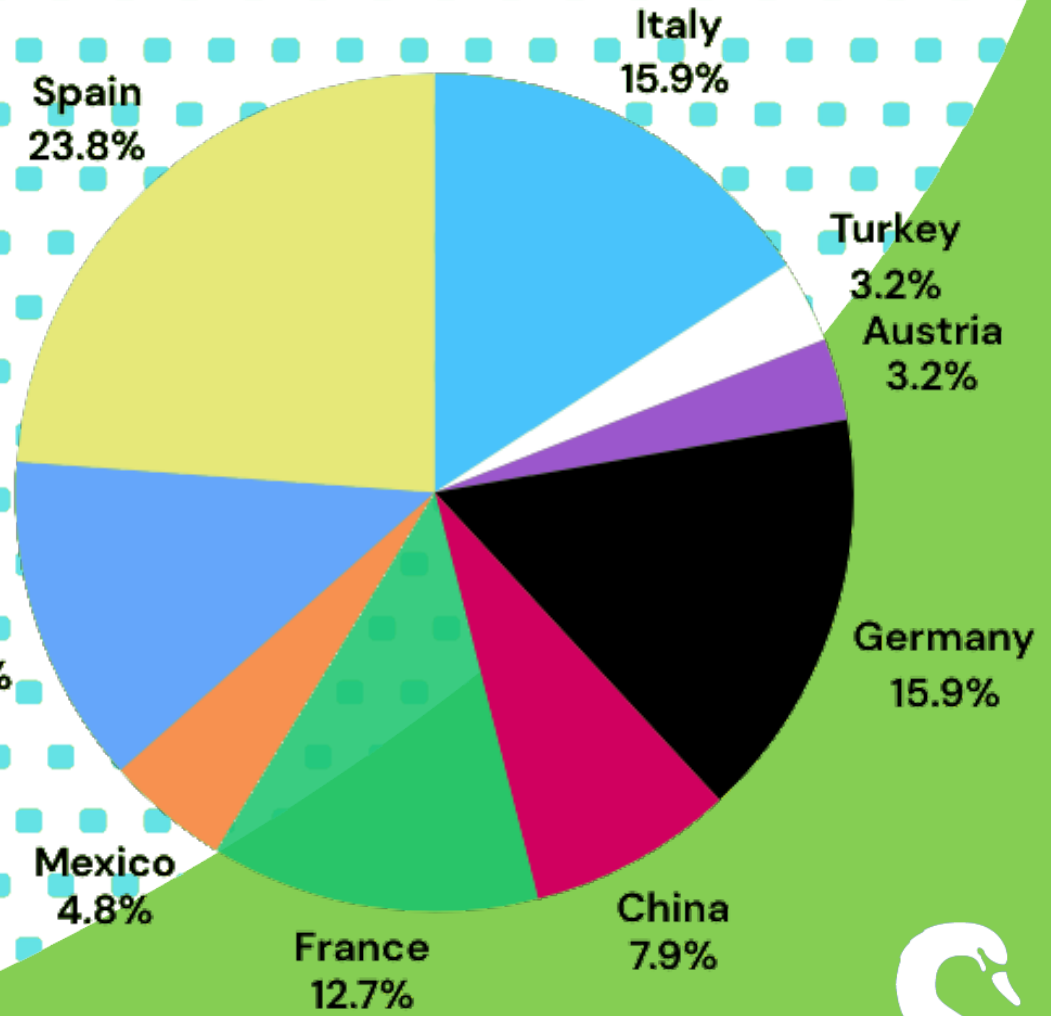
§ Weekend - full day excursion by private coach

Kilkenny/Glendalough/Powerscourt Gardens/Emerald Park





Junior Student Nationality Mix



Accommodation
at
S English **W** Language **A** Training **N**

Host Family

Shared or Single Room

Native English Speakers

Friendly and Welcoming





Residential - UCD

Single Rooms in 4 Suite Bedrooms,
with 2 Shared Bathrooms

Great Campus Facilities On Site

Full Board/All Meals in UCD



JUNIOR INTERNATIONAL SUMMER PROGRAMME GROUP PRICE LIST - July & August

(for students aged 12-17) Venue: University College Dublin (UCD)

First day of class: Monday 29th June 2026 Last day of class: Friday 7th August 2026

Minimum 15 students required for below rates. Please enquire for small group prices

Course Type	Includes	1 week	2 weeks	3 weeks	4 weeks
Host Family	<ul style="list-style-type: none"> Return Airport Transfers (min. 15 students) Shared room full board Daily English Classes 09:00-12:30 5 Afternoon activities p/week 1 Full Day excursion p/week (private coach) 1 Evening Disco p/week (except last week) Lesson Materials Certificate of Completion <p>1 free leader per group of 15 students. Extra leader €395.00 20% non-refundable deposit required at time of booking A Travel Pass is not included in the above package price, but highly recommended - necessary for travelling between the host family and school and for most of the activities (please see prices below) Supplements: One nationality per family €50 per week Food intolerances, allergies, vegan, gluten-free, lactose €45 per week Vegetarian €20 p/week. For other diets please contact us</p>	€1035	€1955	€2815	€3720
Residential	<ul style="list-style-type: none"> Return Airport Transfers (min. 15 students) Single room full board Daily English Classes 09:00-12:30 5 Afternoon activities p/week Variety of evening activities p/week 1 Full Day excursion p/week (private coach) 1 Evening Disco p/week (except last week) Lesson Materials Certificate of Completion <p>1 free leader per group of 15 students. Extra leader €715.00 20% non-refundable deposit required at time of booking Refundable deposit of €50 per student/€250 per group is required for damages and breakages Deposit must be paid with invoice and will be refunded within one week of departure less any damage charges Laundry services available on campus for a small fee Supplement for special dietary requirement €15 p/week A Travel Pass is recommended for half day trips</p>	€1195	€2320	€3370	€4365

For Groups

- 1 FREE group leader for every 15 paying students
- Return airport transfer included for groups arriving/departing on the same flight only
- Supplement of €120 each way per group for late arrival/departure between 20:00-08:00

Travel Pass

Under 16s: (Mon - Sun)
Over 16s: (7 days)

1 Week: €20	1 Week: €35
2 Weeks: €30	2 Weeks: €55
3 Weeks: €40	3 Weeks: €80
4 Weeks: €50	4 Weeks: €105

For Individuals

- Non refundable registration fee €65
- Travel pass (please see prices opposite)
- €100 each way supplement for airport transfer (extra €50 for airport check-in assistance)
- €50 p/week supplement applies for SWAN group leader
- Supplement of €30 each way for late arrival/departure

